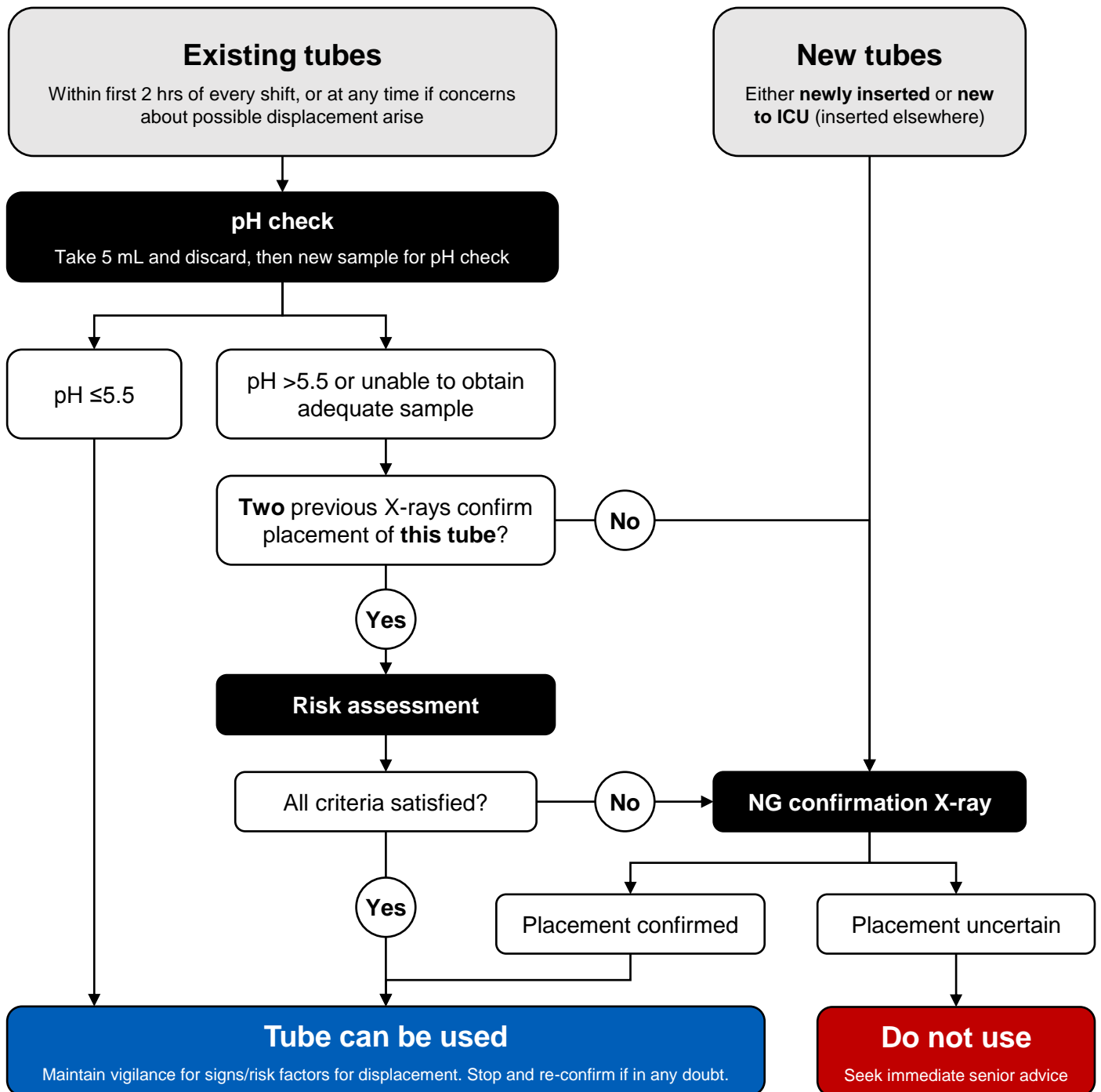


## Quick reference guide

### Checks on enteral (NG/OG) tubes in adult critical care



### How to document...

**Insertion / length / pH**  
*In Assessment and Obs, under Enteral tubes:*

Click

Click

Enter data

**Risk assessment / X-ray interpretation**  
*In Documentation, search 'NG/OG' and select relevant template:*

Documentation

Record View

HIE

Clinical Research

Meds Administration

Medication Summary

Click 'Add'

Document Template

Existing

Pre-configured

Catalogue

Recent

Favourites

Search: ng/og

Restricted display by:

☐ My notes only

☐ Note Type

☐ Recent

☐ Favourites

Search 'NG/OG'

Title

Document template

NG/OG Tube CXR Interpretation Form

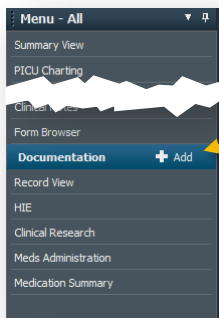
NG/OG Tube CXR Interpretation Form

NG/OG Tube Risk Assessment (Adult Crit Care only)

Dynamic Content Creation

## Quick reference guide

# Finding and completing the NG tube XR interpretation form



1. Click  
+Add

2. Search for 'NG/OG CXR Interpretation Form'

3. Uncheck 'include Assessment Results'. Click OK.

3. If the most recent XR isn't automatically listed, enter it manually by clicking 'Use free text' in the 'Results review' section

Results Review <Show Structure> <Use Free Text>  
CXR on 10/07/2019 at 16:21

4. If the 'Interpretation' questions are not already visible, click 'Show structure'. Complete the details as applicable.

5. Click 'Sign/Submit'