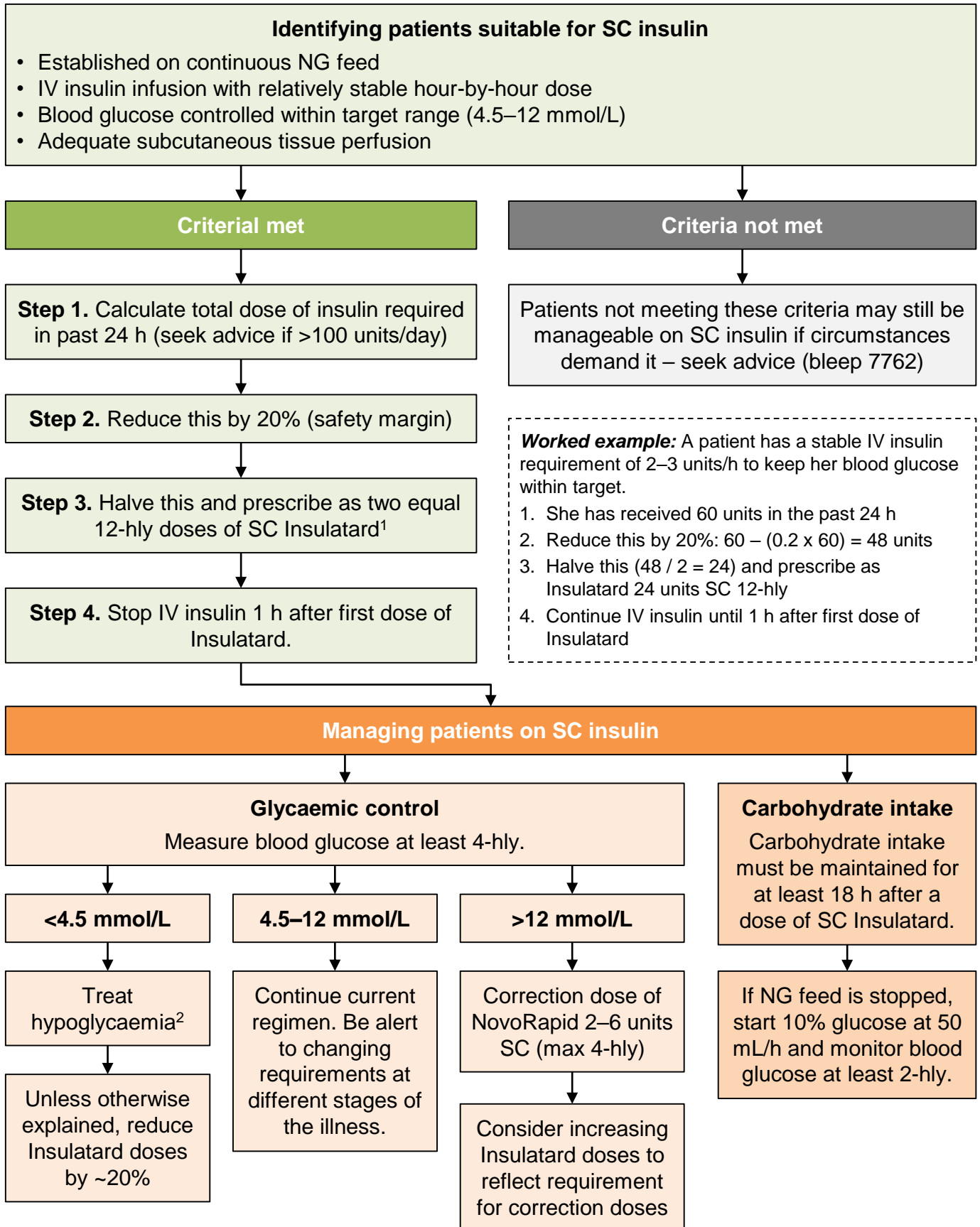


# Guidance for switching from IV to SC insulin in critical illness

This document is intended to provide some practical guidance, not to define a strict pathway or formal policy. It is difficult to cover all circumstances in general guidance notes. **Have a low threshold for seeking advice from the diabetes inpatient team (SpR bleep 7762).**



AH V1.0 (April 2020)

Notes: 1. Insulatard (isophane insulin) is an intermediate-acting insulin, available in vials or prefilled devices. It may be substituted for Humulin I, which has the same absorption profile but is available in prefilled devices only. 2. Treat hypoglycaemia with 10% glucose (50 mL) or 20% glucose (25 mL) IV and then monitor blood glucose at 15 min intervals to confirm resolution.